

Sousa Mallet Audition

solo mallet audition music

#1 Play chromatic scale full range of instrument, up and down, quarter note = 120 - 160

Allegro (M.M. ♩ = c. 120 - 160)

4

7

#2 Play the following etude, quarter note = 120 - 160

Allegro (M.M. ♩ = c. 120 - 160)

11

16

21

#3 Answer the following questions when you upload your mp3 (put in special notes box at time of upload)

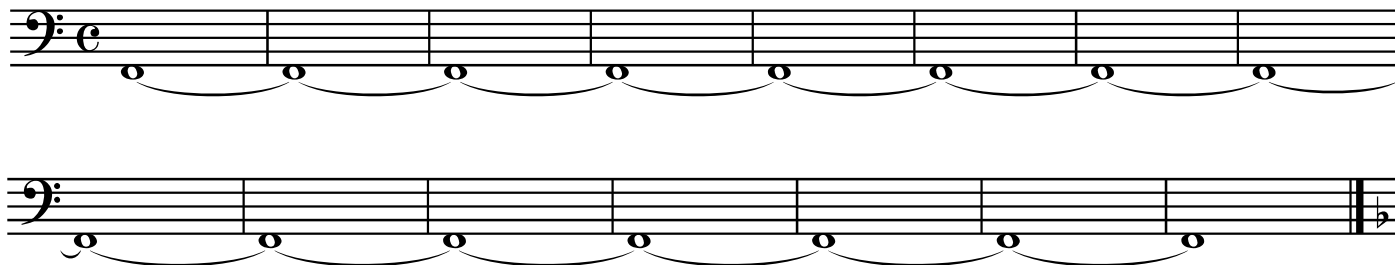
- A. What is your secondary instrument strength (snare drum or timpani)?
- B. Do you feel comfortable tuning timpani by yourself?
- C. Can you play the piano (none, beginner, intermediate, advanced)?

Sousa Timpani Audition

solo timpani audition music

#1 Play long roll ff to pp to ff in 1 minute

Moderato



#2 Play the etude below at a moderato tempo

Moderato (♩ = c. 108)

#3 Answer the following questions when you upload your mp3 (put in special notes box at time of upload)

- A. What is your secondary instrument strength (snare drum or mallet percussion)?
- B. Do you feel comfortable tuning timpani by yourself?
- C. Can you play the piano (none, beginner, intermediate, advanced)?

Sousa Snare Drum Audition

solo snare drum audition music

#1 Play long roll open to closed to open in 1 minute

Moderato

Musical notation for exercise #1, consisting of two staves. The first staff is in common time (C) and contains six measures of open snare drum notes. The second staff is in common time (C) and contains six measures of closed snare drum notes. The piece concludes with a double bar line and a 2/4 time signature.

#2 Play single ratamacue (below) open to closed to open (play rudiment as many times as needed)

Musical notation for exercise #2, consisting of two staves in 2/4 time. The notation shows a single ratamacue pattern of eighth notes with accents, grouped in threes. The first staff ends with a common time (C) signature.

#3 Play the etude below at a moderato tempo

Moderato

Musical notation for exercise #3, consisting of four staves in common time (C). The notation includes various rhythmic patterns such as eighth notes, quarter notes, and triplets. Dynamics markings include *ff*, *sfz p*, *mf*, *mp*, and *f*. Accents are placed over many notes throughout the piece.

#4 Answer the following questions when you upload your mp3 (put in special notes box at time of upload)

- A. What is your secondary instrument strength (timpani or mallet percussion)?
- B. Do you feel comfortable tuning timpani by yourself?
- C. Can you play the piano (none, beginner, intermediate, advanced)?